

CUADRO DE COORDENADAS U.T.M. ( DATUM - PSAD 56 )

CANAL Nº01

VERTICE	LADO	DISTANCIA	ANG. INTERNO	ESTE (X)	NORTE (Y)
15	15-16	11.31	99°31'59"	386230.1935	8484461.0395
16	16-D	212.89	80°28'1"	386241.4995	8484460.7825
D	D-E	11.16	87°31'8"	386201.4774	8484251.6889
E	E-15	210.53	92°28'52"	386190.6144	8484254.2602
TOTAL		445.89	360°0'0"		

CANAL Nº02

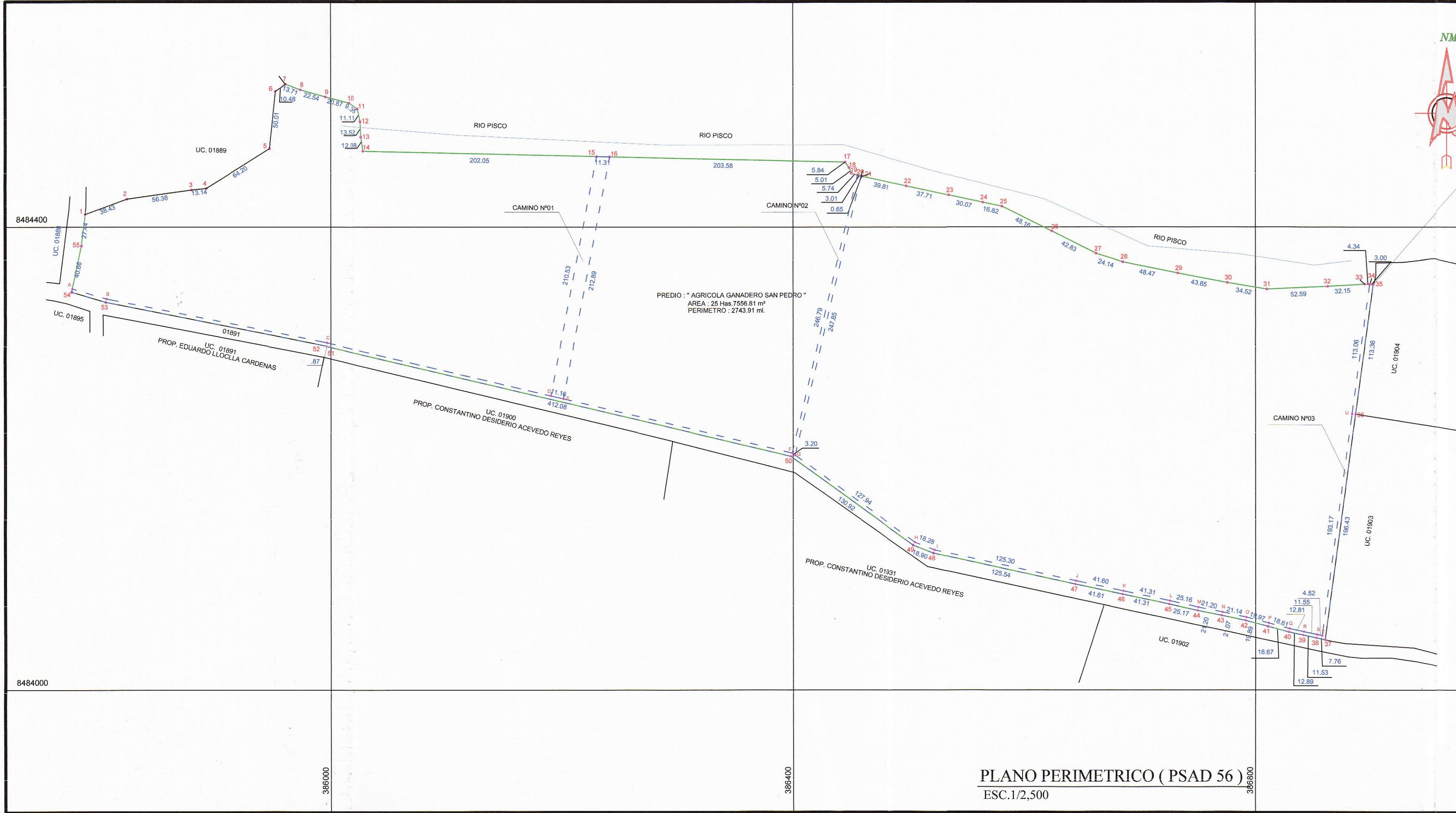
VERTICE	LADO	DISTANCIA	ANG. INTERNO	ESTE (X)	NORTE (Y)
20	20-21	3.01	86°40'32"	386455.7928	8484445.0983
21	21-G	247.85	93°18'50"	386458.6731	8484444.2413
G	G-F	3.20	67°21'17"	386401.8355	8484203.0000
F	F-20	246.79	112°39'20"	386399.2420	8484204.8775
TOTAL		500.85	359°59'59"		

CANAL Nº03

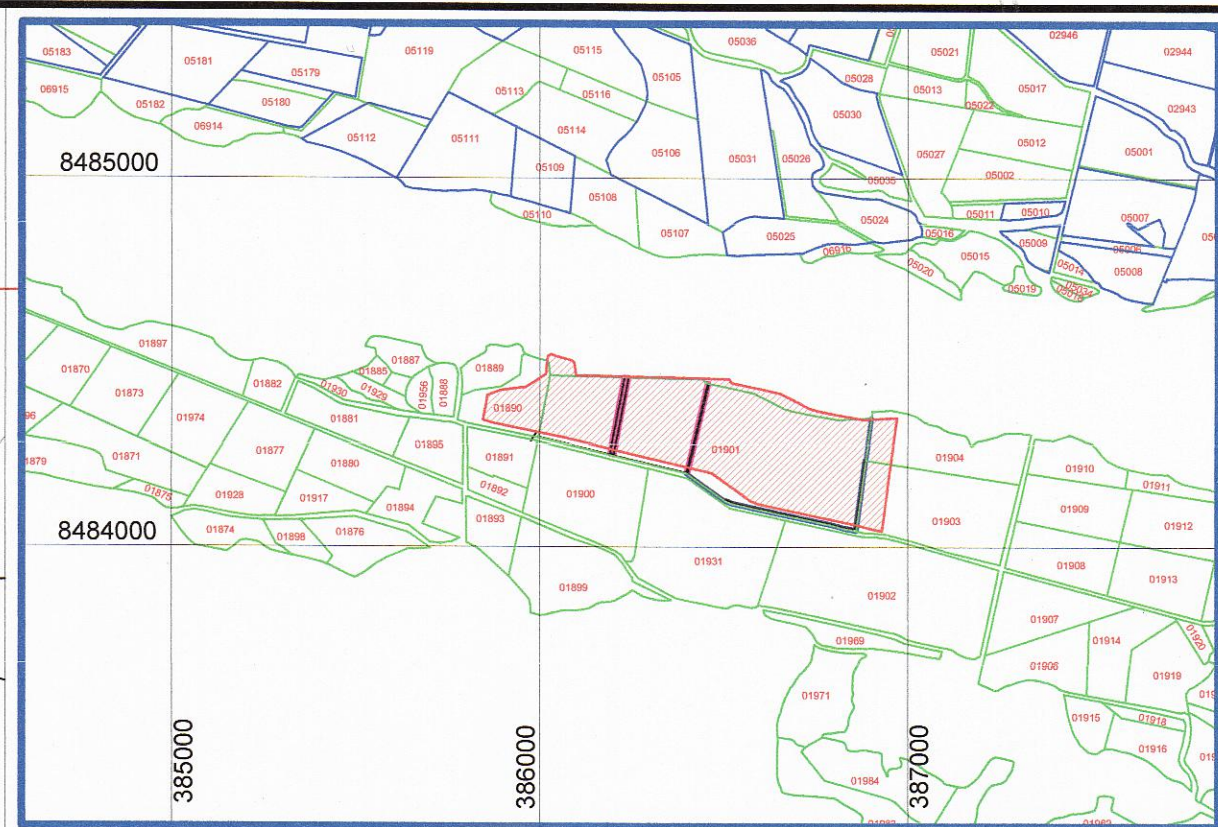
VERTICE	LADO	DISTANCIA	ANG. INTERNO	ESTE (X)	NORTE (Y)
A	A-B	30.91	85°22'48"	385776.7168	8484346.8831
B	B-C	194.10	185°13'27"	385806.3571	8484338.1044
C	C-D	199.26	177°57'23"	385996.7097	8484300.1590
D	D-E	11.16	180°0'1"	386190.6144	8484254.2602
E	E-F	203.23	180°0'0"	386201.4774	8484251.6889
F	F-G	3.20	157°24'52"	386399.2420	8484204.8775
G	G-H	127.94	180°0'0"	386401.8355	8484203.0000
H	H-I	18.28	194°25'77"	386505.4693	8484127.9746
I	I-J	125.30	189°7'50"	386522.4813	8484121.2827
J	J-K	41.60	180°15'39"	386644.8811	8484094.5009
K	K-L	41.31	179°59'2"	386685.5594	8484085.7941
L	L-M	25.16	179°59'33"	386725.9566	8484077.1357
M	M-N	21.20	180°34'12"	386750.5563	8484071.8598
N	N-O	21.14	179°25'35"	386771.3277	8484067.6206
O	O-P	19.97	177°41'58"	386791.9994	8484063.1857
P	P-Q	18.61	179°10'5"	386811.3411	8484058.2163
Q	Q-R	12.81	183°9'21"	386829.2995	8484053.3233
R	R-S	11.72	179°51'15"	386841.8266	8484050.6412
S	S-T	4.35	179°51'17"	386853.2799	8484048.1585
T	T-U	193.17	274°39'10"	386857.5272	8484047.2265
U	U-34	113.06	179°59'11"	386883.4872	8484238.6423
34	34-35	3.00	95°37'41"	386898.7086	8484350.6764
35	35-36	113.36	84°22'45"	386901.7065	8484350.5660
36	36-37	196.43	180°0'10"	386886.4600	8484238.2389
37	37-38	7.76	85°0'0"	386860.0485	8484043.5885
38	38-39	11.53	180°40'11"	386852.4788	8484045.2982
39	39-40	12.78	180°0'0"	386841.1985	8484047.7077
40	40-41	18.79	176°48'59"	386828.9888	8484050.3777
41	41-42	18.89	180°49'55"	386810.5735	8484055.3161
42	42-43	21.07	182°18'2"	386791.3112	8484060.2651
43	43-44	21.20	180°34'25"	386770.7130	8484064.6842
44	44-45	25.17	179°25'48"	386749.9418	8484068.9234
45	45-46	41.31	180°0'27"	386725.3279	8484074.2023
46	46-47	41.61	180°0'58"	386684.9315	8484082.8605
47	47-48	125.54	179°44'21"	386644.2465	8484091.5687
48	48-49	18.90	170°52'10"	386521.6061	8484118.4033
49	49-50	130.92	165°34'13"	386504.0177	8484125.3219
50	50-51	412.08	202°34'51"	386397.9679	8484202.0963
51	51-52	.87	182°0'18"	385996.9725	8484297.0469
52	52-53	194.24	180°2'34"	385996.1232	8484297.2189
53	53-54	30.81	174°45'27"	385805.6359	8484335.1892
54	54-A	3.00	94°38'17"	385776.0993	8484343.9474
TOTAL		2887.74	7199°59'58"		

PREDIO : " AGRICOLA GANADERO SAN PEDRO "

VERTICE	LADO	DISTANCIA	ANG. INTERNO	ESTE (X)	NORTE (Y)
1	1-2	38.43	117°17'33"	385787.7837	8484410.9737
2	2-3	56.38	167°37'7"	385823.8180	8484424.3410
3	3-4	13.14	178°8'43"	385879.6506	8484432.1594
4	4-5	64.20	206°4'28"	385892.7120	8484433.5591
5	5-6	50.01	231°50'13"	385947.0439	8484467.7622
6	6-7	10.48	130°40'53"	385952.2470	8484517.5021
7	7-8	13.71	125°14'48"	385960.8639	8484523.4708
8	8-9	22.54	184°23'48"	385973.7439	8484518.7718
9	9-10	20.87	181°13'16"	385995.4470	8484512.6930
10	10-11	9.35	160°15'50"	386015.6576	8484507.4941
11	11-12	11.11	136°27'28"	386023.3922	8484502.2452
12	12-13	13.52	170°27'55"	386025.7587	8484491.3874
13	13-14	12.38	185°33'3"	386026.4102	8484477.8801
14	14-15	202.05	260°23'7"	386028.1995	8484465.6326
15	15-16	11.31	180°0'0"	386230.1935	8484461.0395
16	16-17	203.58	180°0'0"	386241.4995	8484460.7825
17	17-18	5.84	126°22'51"	386445.0269	8484456.1545
18	18-19	5.01	167°14'41"	386448.3830	8484451.3755
19	19-20	5.74	231°6'20"	386455.7928	8484445.0983
20	20-21	3.65	180°0'0"	386458.6731	8484444.2413
21	21-22	39.81	184°28'54"	386459.2922	8484444.0570
22	22-23	37.71	179°58'58"	386498.2209	8484435.7187
23	23-24	30.07	180°11'0"	386535.0880	8484427.8103
24	24-25	16.82	180°0'54"	386564.4927	8484421.5116
25	25-26	48.16	165°35'40"	386580.9432	8484417.9923
26	26-27	42.83	179°38'43"	386624.0525	8484396.5167
27	27-28	24.14	189°45'25"	386662.2719	8484377.1806
28	28-29	48.47	185°31'30"	386685.3438	8484370.0921
29	29-30	43.65	180°43'39"	386732.8316	8484360.3840
30	30-31	34.52	181°21'25"	386775.7018	8484352.1857
31	31-32	52.59	192°4'25"	386809.7489	8484346.5069
32	32-33	32.15	180°51'15"	386862.2831	8484348.8964
33	33-34	4.34	174°25'7"	386894.3760	8484350.8360
34	34-35	3.00	180°0'0"	386898.7086	8484350.6764
35	35-36	113.36	84°22'45"	386901.7065	8484350.5660
36	36-37	196.43	180°0'10"	386886.4600	8484238.2389
37	37-38	7.76	85°0'0"	386860.0485	8484043.5885
38	38-39	11.53	180°40'11"	386852.4788	8484045.2982
39	39-40	12.81	180°0'0"	386841.1985	8484047.7077
40	40-41	18.79	176°48'59"	386828.9888	8484050.3777
41	41-42	18.89	180°49'55"	386810.5735	8484055.3161
42	42-43	21.07	182°18'2"	386791.3112	8484060.2651
43	43-44	21.20	180°34'25"	386770.7130	8484064.6842
44	44-45	25.17	179°25'48"	386749.9418	8484068.9234
45	45-46	41.31	180°0'27"	386725.3279	8484074.2023
46	46-47	41.61	180°0'58"	386684.9315	8484082.8605
47	47-48	125.54	179°44'21"	386644.2465	8484091.5687
48	48-49	18.90	170°52'10"	386521.6061	8484118.4033
49	49-50	130.92	165°34'13"	386504.0177	8484125.3219
50	50-51	412.08	202°34'51"	386397.9679	8484202.0963
51	51-52	.87	182°0'18"	385996.9725	8484297.0469
52	52-53	194.24	180°2'34"	385996.1232	8484297.2189
53	53-54	30.81	174°45'27"	385805.6359	8484335.1892
54	54-55	40.66	94°38'17"	385776.0993	8484343.9474
55	55-1	27.44	184°56'18"	385784.4688	8484383.7393
TOTAL		2743.91	9539°59'58"		



PLANO PERIMETRICO ( PSAD 56 )  
ESC.1/2,500



PLANO DE UBICACION  
ESC.1/20,000

Emiliano Y. Ramos Flores  
INGENIERO CIVIL  
Reg. del Colegio de Ingenieros N° 58213  
CIV N° 003017VCZRXI

PROPIETARIO:			
<b>PEDRO RAMOS FERNANDEZ</b>			
PLANO: UBICACION - PERIMETRICO			
PREDIO: " AGRICOLA GANADERO SAN PEDRO "			
UC.01901			
DEPART.:	PROVINCIA:	DISTRITO:	SECTOR:
ICA	PISCO	HUMAY	CUCHILLA NUEVA
AREA:	DIBUJO:	FECHA:	ESCALA:
25 Has.7556.81 m²	E.J.R.C.	NOVIEMBRE 2013	INDICADA
			LAMINA N°:
			<b>UP-01</b>